

Investigation of laser induced inhibition and simulation in biological samples

Fadhali M. M.^{a*}, Nahlah M.H.^a, Fadhl A.^b, Saktioto T.^c, Jalil A.^d, Rosly A. Rahman^d

^{a*} Department of Physics, Faculty of Science, Ibb University, Ibb, Yemen

P.O.Box 70270, Fax: +967 4 419964

^bDepartment of Microbiology, Faculty of Science, Ibb University, Ibb, Yemen

^cPhyscis Dept. Faculty of Math and Natural Sciences, University of Riau, Indonesia.

^d Advanced Photonics Science Institute, Universiti Teknologi Malaysia, Johor, Malaysia

* Corresponding author email: mohamedfadhali@yahoo.com

All rights reserved © [Arab British Academy for Higher Education](http://www.abahe.co.uk)

Abstract

In this research, some experimental measurements have been carried out to study the biological effects induced by laser irradiation on bacterial samples prepared by different ways and at different conditions. Considering the induced samples, the effect of laser irradiation has been investigated through analyzing some of the properties of the transmitted and scattered laser beam for determining the stimulation or inhibition experienced by the investigated sample. In this study absorbance and scattering values as well as their ratio have been measured for all the possible angles for different irradiation times and different properties of the laser beam. The obtained results will significantly contribute in determining the effective utilization of the laser beam as a medical tool for accelerating the wounds and burns healing at diabetic patients whom their response to

anti-biotic is not appropriate. The simultaneous irradiation of samples with the use of anti-biotic shows significantly positive effect and fast response.

Keywords: photobiology – inhibition – stimulation – absorption – laser therapy

Introduction

The logo for the Arab British Academy for Higher Education (ABAHE) is a large, semi-transparent watermark in the background. It features the acronym 'ABAHE' in a bold, white, serif font, centered within a horizontal red rectangular bar. Below this bar is a stylized red figure of a person with arms raised in a 'V' shape, with a circular head. The entire logo is centered on the page.

ABAHE

Lasers as highly stable sources of coherent and monochromatic light, have been used extensively in technical applications and for medical therapy. Laser light can interact with tissue in four ways namely: transmission, reflection, scattering and absorption. Transmission refers to the passage of light through a tissue without having any effect on that tissue or on the properties of the light. The transmission of laser radiation in tissues is related to its wavelength. Reflection refers to the repelling of light off the surface of the tissue without entering the tissue. Scattering of light occurs after it has entered the tissue, whereby the beam of light is spread out within the tissue resulting in irradiation of a larger area than anticipated [1,2,3]. Absorption is a process by which a photon gives up energy to its surrounding medium. This energy is ultimately responsible for photobiostimulation [5].

The effect of laser irradiation on biological objects depends on experimental conditions, such as the type of irradiated cells, wavelength and intensity of light, etc. Laser was first used in the medical field as a focused, high power beam with photothermal effects in which tissue was vaporized by the intense heat. It was postulated that surgical lasers normally have Gaussian beam modes. In such mode the laser power is highest at the

center of the beam and falling off in a bell-shaped curve with the weakest power at the periphery of the beam diffusing out into the undamaged tissues [1,11]. This phenomenon was called the "alpha-phenomenon" [5]. Laser devices were manufactured in which power densities and energy densities of laser were lowered to a point where no photothermal effects occurred but the photo-osmotic, photo-ionic and photo-enzymatic effects were still operative. Applications of lasers are now widespread in almost every medical specialty, especially dermatology, ophthalmology and medical acupuncture.

The diverse tissue and cell types in the body all have their own unique light absorption characteristics; that is, they will only absorb light at specific wavelengths and not at others. For example, skin layers, because of their high blood and water content, absorb red light very readily, while calcium and phosphorus absorb light of a different wavelength. Once a photobiological response is observed, the next step should be to determine the optimum wavelength and dose of radiation to produce the effect, i.e., an action spectrum. An action spectrum is a plot of the relative effectiveness of different wavelengths of light in causing a particular biological response, and under ideal conditions it should mimic the absorption spectrum of the molecule that is absorbing the light, and whose photochemical alteration causes the biological effect. Thus, an action spectrum not only identifies the wavelength(s) that will have the maximum effect with the least dose of radiation, but it also helps to identify the target of the radiation. For example, the action spectrum for killing bacteria mimics the absorption spectrum of deoxyribonucleic acid (DNA). This result is understandable in view of the unique importance of DNA to a cell. Low-level laser Photobiology uses radiation both in the

visible (400nm - 700 nm) and in the near-infrared (700nm - 1000 nm) regions of the spectrum. When a photon is absorbed by a molecule, the electrons of that molecule are raised to a higher energy state. This excited molecule must lose its extra energy, and it can do this either by re-emitting a photon of longer wavelength (i.e., lower energy than the absorbed photon) as fluorescence or phosphorescence, or it can lose energy by giving off heat, or it can lose energy by undergoing photochemical alteration. Photobiological responses are the result of photophysical and/or photochemical changes produced by the absorption of nonionizing radiation.

Karu [6] has shown that visible and near-infrared radiation is absorbed in the respiratory chain molecules in the mitochondria (e.g., cytochrome), which results in increased metabolism, which leads to signal transduction to other parts of the cell, including cell membranes, and ultimately to the photoresponse (e.g., stimulation of growth).

Laser irradiation as a phototherapeutic modality for the induction or acceleration of wound healing was first introduced by *Mester et al.* [4,5] in the 1970s but still is not an established therapy. This is mainly due to the fact that substantial amounts of research were originally done in East European countries and published in non-peer-reviewed journals. Moreover, there has often been a lack of accuracy in the documentation of exact irradiation protocols and the incorporation of appropriate controls in the past. Additionally, the variety of laser systems and experimental conditions utilized made comparison of results difficult. Since more well-controlled studies have been performed and since the Food and Drug Administration (FDA) has initiated research in the field of low intensity laser therapy [1], this phototherapy is gaining increasing interest.

Experimental Methods

This research work has been initiated by setting up the experimental set up illustrated in Fig.(1) which consists of laser source, sample stage, optical detection circuit and magnetic stirrer. This experimental setup has been designed for two types of measurements, i.e. transmission and scattering measurements.

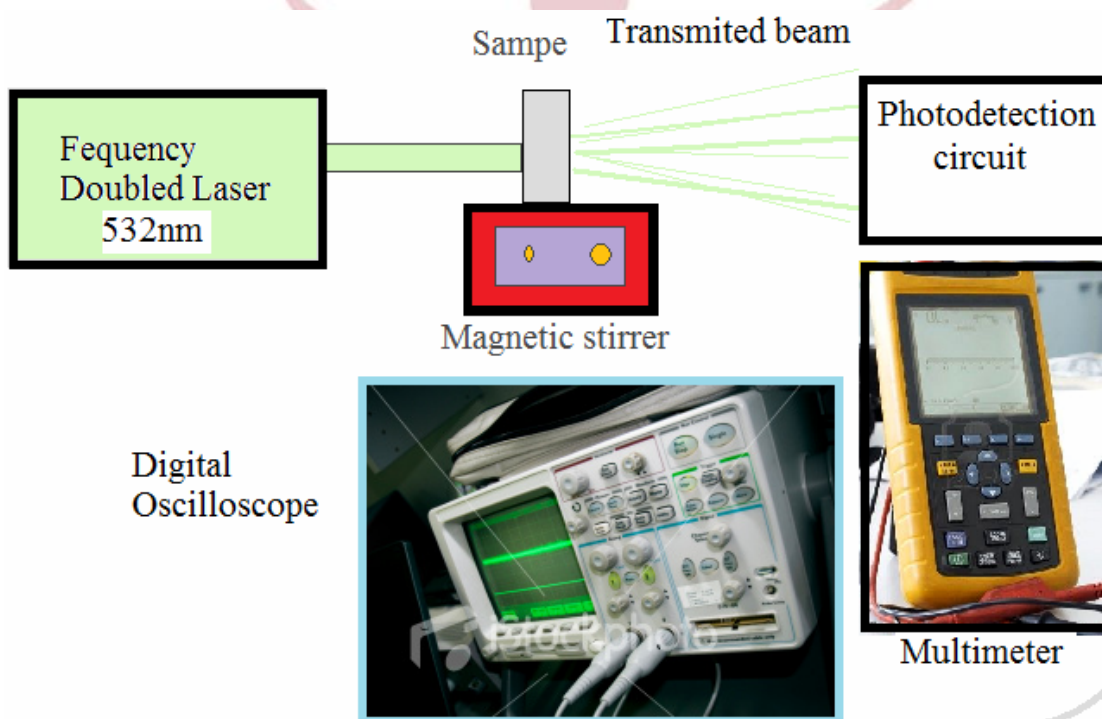


Fig.(1) Experimental Setup

The samples were irradiated with DPSS laser of output power of 50 mW &150mW and wavelength of 532 nm (green). The investigated samples are Catalase Enzyme and Staphylococcus bacteria that are prepared with different concentrations using the

common biological methods. The experimental results was based on the measurements of the transmitted and/or scattered laser beam.

Results and Discussions:

I- Results for Catalase Enzyme

Catalase Enzymes samples are prepared with different concentrations from yeast in cuvette with distilled water and irradiated for different irradiation times. The detection process has been performed using H_2O_2 . The obtained results revealed that significant effect have been occurred as shown in Fig.(2). The reaction time is significantly decreasing with the irradiation time. The reaction time is dependent on the concentration of the sample and increasing with the increasing of the concentration. However, for specific concentration the reaction time is decreasing with the irradiation time and at a concentration of 0.6 g/mL the reaction time is greatest for all irradiation times and drastically decreasing with the increasing of irradiation time as it is shown in Fig. (3). These results assured the applicability of laser irradiation to stimulate Enzymes reaction concentration. It also reveals that there will be an optimum concentration that that exhibit significant trend. Moreover, the stimulation effect is enhanced with the increasing of irradiation time.

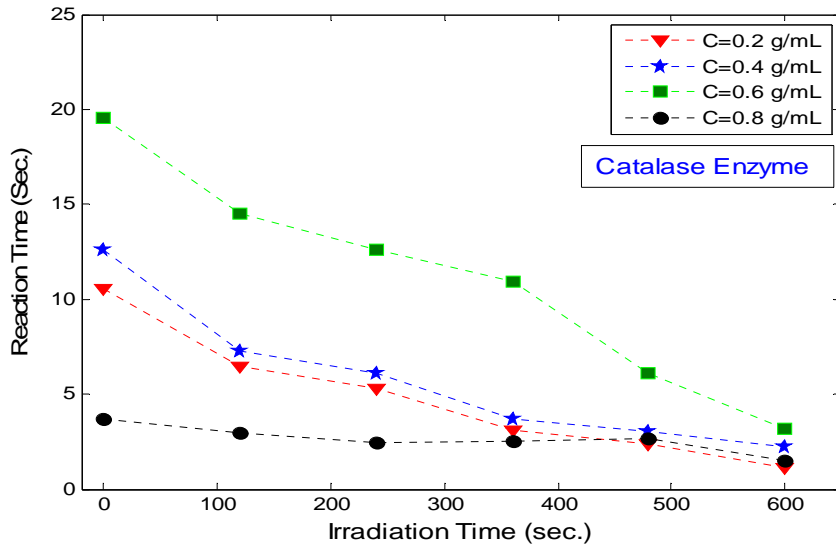


Fig.(2) Variation of reaction time with the irradiation time for different sample concentration

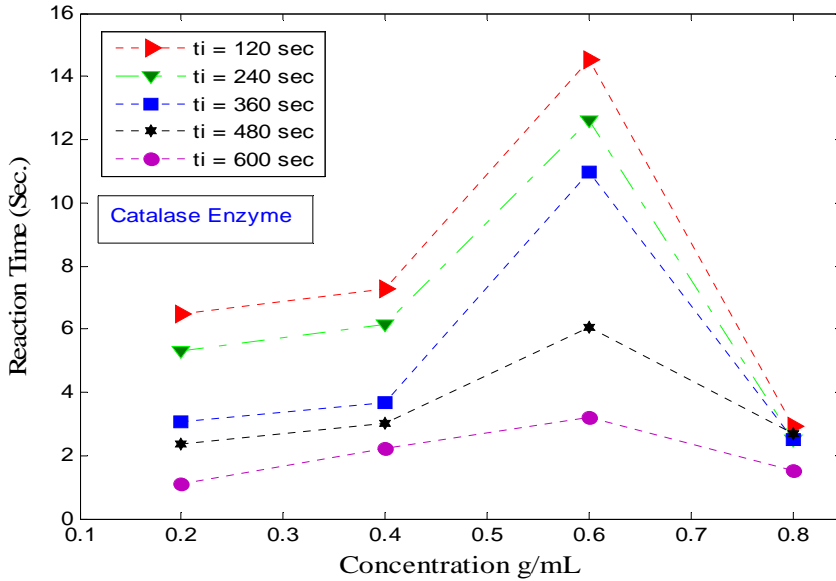
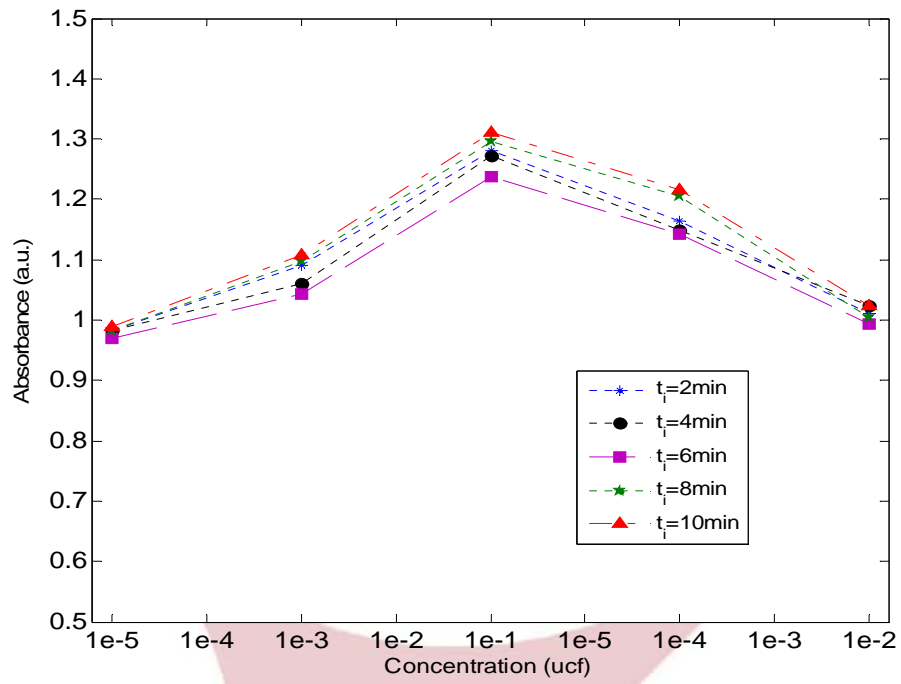


Fig.(3) Variation of reaction time with the sample concentration for different irradiation times

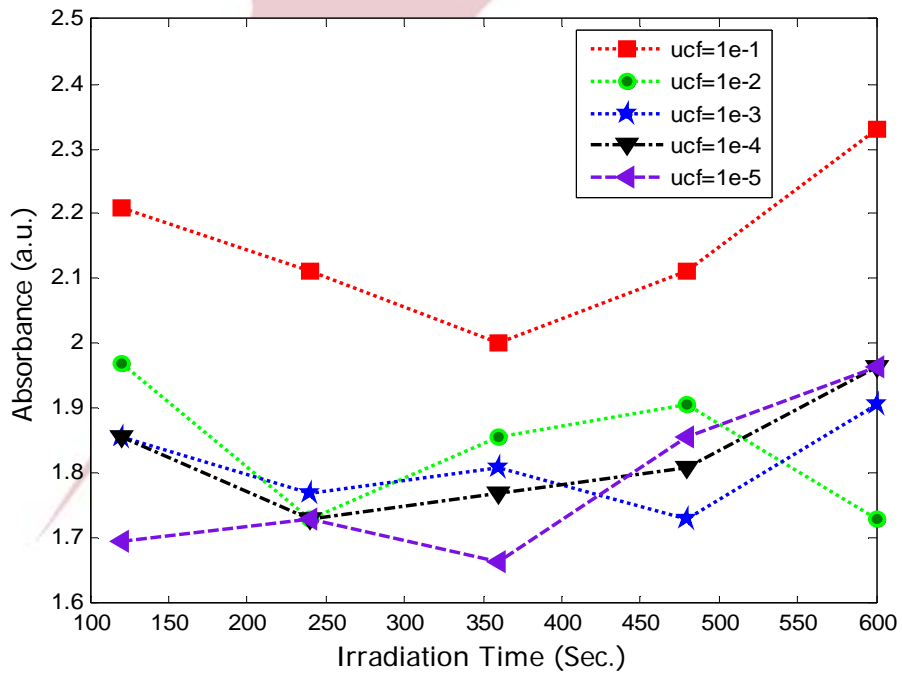
II- Bacteria Sample (Staphylococcus)

Samples (Staphylococcus injected into normal saline solution) have been clinically collected and prepared in different unit cell formation (ucf). The samples was put on a stirrer at 15cm away from the laser source (laser spot diameter 0.2 cm). The samples have been arranged in two different forms, i.e. on plates and/or in cuvettes. The effects of irradiation with laser of 150mW, 50mW and wavelength of 532nm on reaction time and absorbance of the prepared samples have been studied for different sample concentration. The obtained results revealed that significant effect have been occurred. As depicted in Fig. (4), the absorbance of the laser beam is found to be strongly dependent on the concentration of the sample and time of irradiation and there is also an optimum concentration that exhibit best effect trend as shown in Fig.(5).

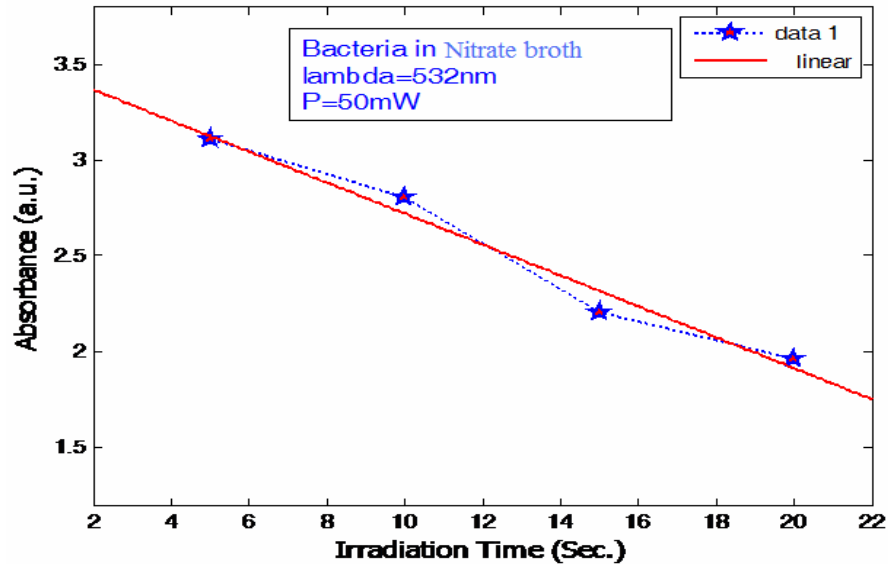
The linearity of that effect was found to take better trend when irradiated with laser power of 50 mw laser as shown in Fig. (6). It is emphasized that with low laser power irradiation, there is only inhibition effect and the stimulation was not observed even with increasing of irradiation time. This suggests that low laser power can work better for wound healing in diabetes patients.



Fig(4) Variation of absorbance with the concentration for different irradiation times.



Fig(5) Variation of absorbance with the irradiation time for different sample concentrations



Fig(6) Variation of absorbance with the irradiation time for different sample concentrations

The scattered laser intensity from the irradiated sample has been also measured for different scattering angles as depicted in Fig. (7). There is an optimum scattering angle (50 degree) at which the scattered intensity is maximum and decreasing below and above that angle. The scattered intensity is also greatly affected by sample concentration and irradiation time (here the effect was best observed for irradiation time of 10 min.).

On the other hand when investigating the effect of simultaneous use of laser irradiation with antibiotics, it was noted that this procedure increases the impact effectiveness of the antibiotics on the investigated samples which is represented by the effective diameter range as shown in Fig.(8). These results mean that good selection and optimization of the wavelength, intensity and the time of irradiation with the type of antibiotic is an important process to determine the effectiveness of the medical treatment utilizing these methods.

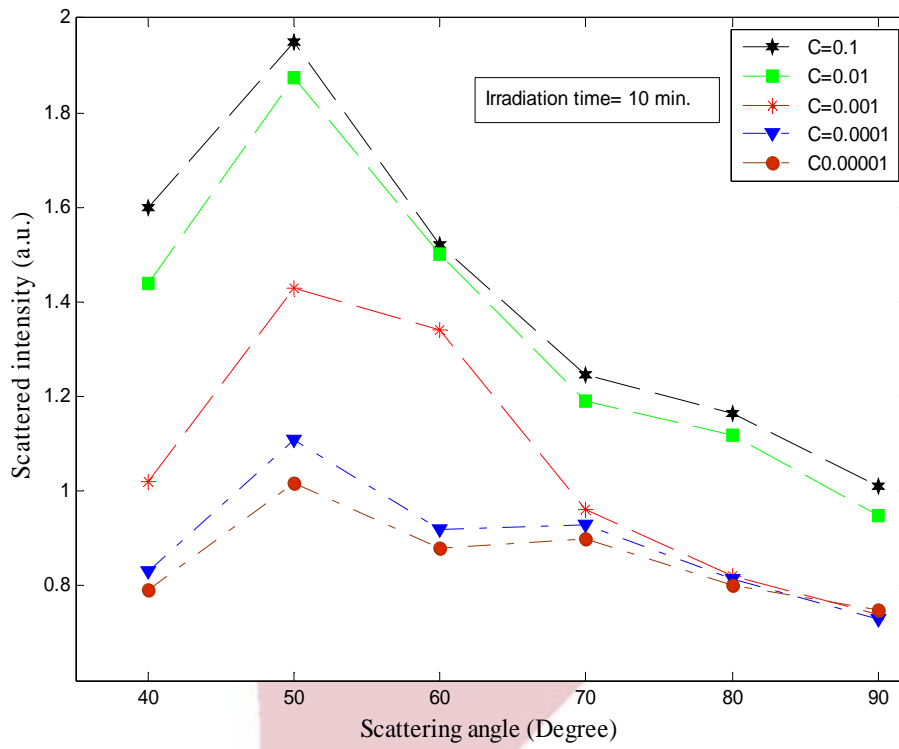


Fig.(7) Variation of scattered intensity with scattering angle.

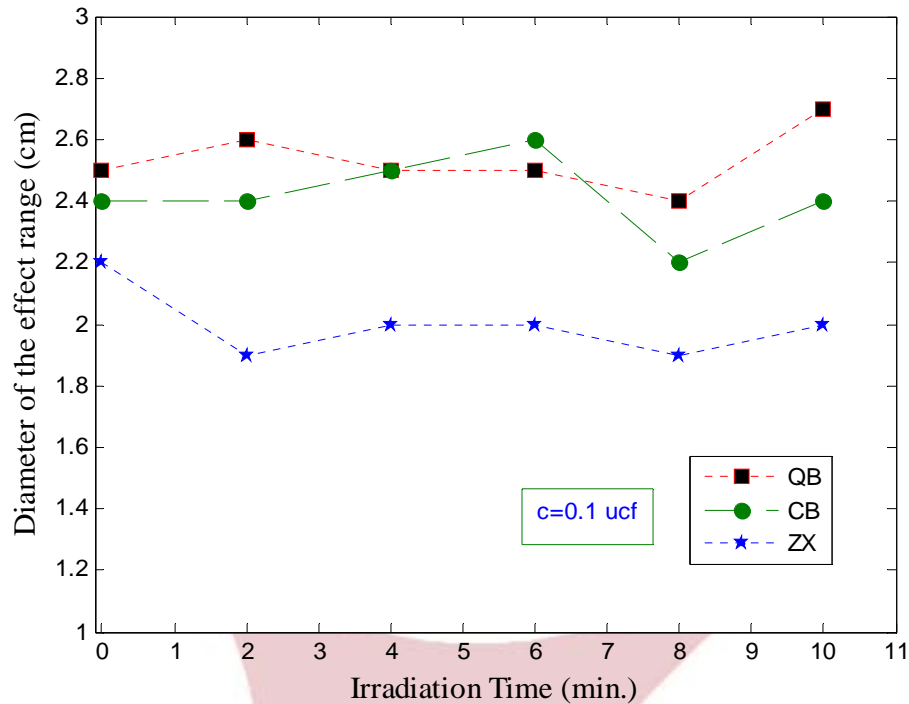


Fig.(8) Variation of diameter of the effect range with irradiation time.

Conclusion

Enzyme catalase and Staphylococcus Bacteria samples have been prepared in various concentrations and different conditions. They were irradiated for different irradiation times with different laser beam characteristics. From the obtained results, the photobiological stimulation and inhibition was clearly demonstrated for both Enzymes and Bacterial samples. That was clear from the absorbance and scattering trends. However, for the case of low laser power irradiation, it has been found that the irradiated bacterial samples experienced only inhibition effect which was obvious from the decreasing of absorbance with the irradiation time. Moreover, the simultaneous irradiation along with the anti-biotec incorporation shows that the effectiveness of the

anti-biotech was significantly enhanced with the laser irradiation. The process of laser irradiation as well as optimization of both laser beam characteristics and samples conditions led to a conclusion of the effectiveness of laser irradiation on the investigated samples which means that this method with the required optimization can eventually be an effective therapeutic tool for many diseases especially for wound healing of diabetic patients. Moreover, further development of this technique can end up with an efficient tool for cancerous and malignant diseases.

References

1. Laser–Tissue Interactions: Fundamentals and Applications,. Markolf H. Niemz. Springer: Berlin, 1996, 297 pp., ISBN 3- 54060363-8.
2. Smith K. C. Light and Life: The Photobiological Basis of the Therapeutic Use of Radiation from Lasers. Progress in Laser Therapy Selected Papers from the first meeting of the International Laser Therapy Association, Okinawa, 1990. Ed. Oshiro T and Calderhead R.G. pp 11-18.
3. Goepel Roland, MD. Low Level Laser Therapy in France. Progress in Laser Therapy. Selected Papers from the first meeting of the International Laser Therapy Association, Okinawa, 1990. Ed. O. T and Calderhead R. O. pp 71-74

4. Gartner C (1992). Low reactive-level laser therapy (LLLT) in rheumatology a review of the clinical expedience in the author's laboratory. *Laser Therapy* 1992; 4:107-115.
5. Zheng, H., Qin, J-Z, Yin H. and Yin S-Y (1993). The activating action of low level Helium neon laser radiation on macrophages in the mouse model. *Laser Therapy*, 1993, 4: 55-58.
6. Karu, T. (1992). Derepression of the genome after irradiation of human lymphocytes with He-Ne laser *Laser Therapy* 1992, 4: 5-24
7. Wilden L. and Dindinger D, A Review of Clinical Applications of Low Level Laser Therapy in Veterinary Medicine. *Laser Therapy*. 1989; 1(4): 183.
8. Mikhallov, VA., Skobelkin, O.K., DenisovI, I.N., Frank, G.A. and Voltchenko, N.N. (1993). Investigations on the influence of low level diode laser irradiation on the growth of experimental tumours. *Laser Therapy* 1993; 5: 33-38.
9. Singh A, Kuhad RC, Kumar M (1995) Xylanase production by a hyperxy lanolytic mutant of *Fusarium oxysporum*. *Enzyme Microb Technol* 6:551–553.
10. Van Laer KMJ, Voragen CHL, Kroef T, Vanden Broek LAM, Beldman G, Voragen AGJ (1999) Purification and mode of action of two different arabinoxylan arabinofuranohydrolases from *Bifidobacterium adolescentis* DSM 20083. *Appl. Microbiol Biotechnol* 51:606–613.
11. Vladimirov YUA, Osipov AN, Klebanov GI (2004) Photobiological principles of therapeutic applications of laser